

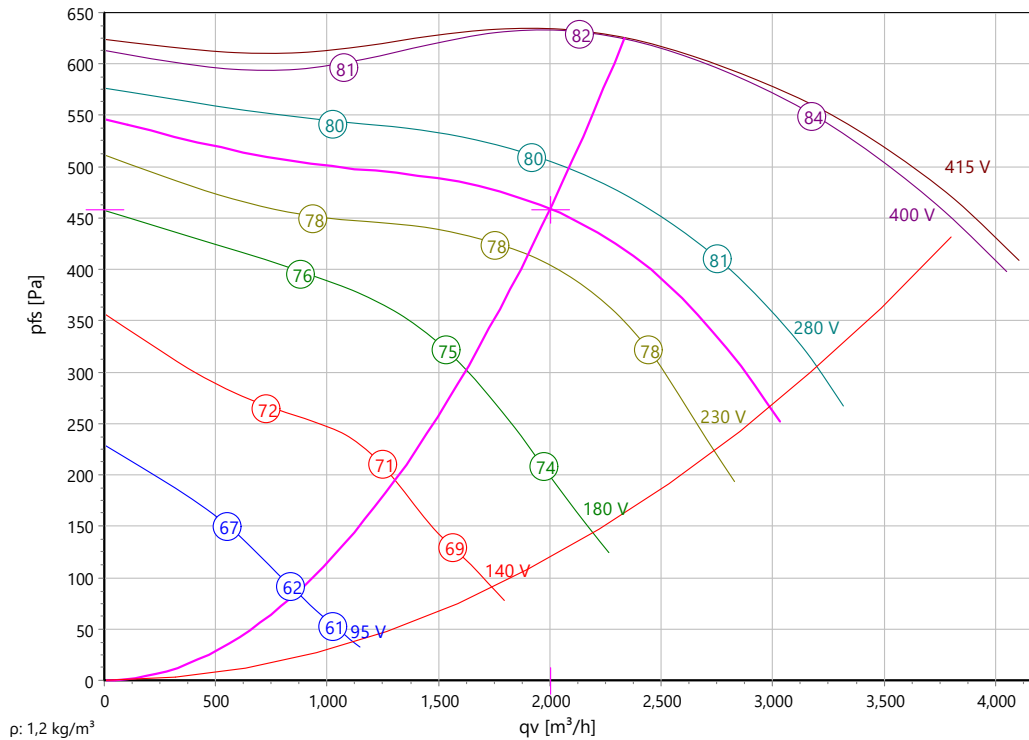
Centrifugal Fan

Type: **ERAD 315-4 K S**

Art.-No.: B10-31543



Curve:



ErP-Data:

(EU) Nr. 327/2011	(Lot11)
q _v	2721 m ³ /h
p _f	652 Pa
η _{e,tot}	43,1 %
P _e	1,15 kW
n	1347 r/min
N	47
v	9,49 m/s

Operating Point:

q _v	2001 m ³ /h
p _{fs}	459 Pa
p _{fd}	30 Pa
η _{e,fs}	33 %
η _{e,tot}	35 %
P _e	0,786 kW
I	2,1 A
n	1186 r/min
L _{WA B,OUT}	79 dB(A)
U	257 V
v	6,98 m/s
SFP	1415 Ws/m ³
FEI	1,0

Intersections:

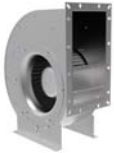
Curve	q _v [m ³ /h]	p _{fs} [Pa]	P _e [kW]	I [A]	n _N [r/min]	L _{WA B,OUT} [dB(A)]
415 V	2335	626	1,048	2,2	1373	82
400 V	2335	625	0,999	2,13	1370	82
280 V	2085	499	0,843	2,1	1233	80
230 V	1901	415	0,718	2,14	1131	78
180 V	1624	303	0,557	2,16	966	74
140 V	1306	196	0,394	2,02	784	70
95 V	863,9	86	0,208	1,63	534	61

Nominal Data:

U [V]	f [Hz]	C [μF]	P _e [kW]	I _N [A]	n _N [r/min]	t _R [°C]	p _{fs,min} [Pa]	I _A / I _N	IP	m [kg]
400 D	50	-	1,63	2,85	1270	40	450	3,3	IP 54	-

Sound Data:

Frequency	Σ	125Hz	250Hz	500Hz	1kHz	2kHz	4kHz	8kHz	Distances	1 m	4 m
L _{wA(B,in)} [dB(A)]	76	57	65	65	71	71	68	62	L _{pA(B,in)} [dB(A)]	69	58
L _{wA(B,out)} [dB(A)]	79	56	69	71	75	72	70	63	L _{pA(B,out)} [dB(A)]	72	61



Centrifugal Fan

Type: **ERAD 315-4 K S**

Art.-No.: B10-31543

